



# mullet drive

## user manual

The **Mullet Drive** is a 2-channel overdrive pedal. My goal was to develop an overdrive pedal that seamlessly works with both single coil and humbucker guitars. The result is this 2-channel overdrive pedal that offers a wide range of tonal variations. Whether you're looking for a smooth, vintage overdrive or a more aggressive, modern sound, the Mullet Drive has everything you need.

### color

The mullet drive has 2 voicing activated by the "color" switch. The LED shows current voicing.

#### yellow:

- Treble emphasis
- Active germanium diode for harmonic distortion

#### red:

- Midrange emphasis
- Active signal boost
- MOSFET clipping for straight distortion

### volume / tone/ drive

Each knob has a unique effect on the sound, and the way they interact with each other provides a multitude of possibilities for tone shaping. By adjusting the different knobs, you can explore a wide range of sounds until you find the one that matches your preferences. Don't hesitate to experiment and try different combinations, as it can lead to exciting results. Also make sure to check our website for demonstration videos.

### power

Please use only a standard pedal power supply with a center negative polarity. You must plug in a cable to activate the pedal.

It is recommended to use grounded power supplies to prevent hum. Likewise, the analog pedal should not be used with digital pedals in a daisy-chain setup. When connecting through a mixer, audio interface, or PC, ground loops may occur, which could require a non-grounded power supply.

### LED switch

You can use the LED switch to toggle between the two modes for the COLOR LED:

#### ON:

COLOR LED representing the current tone is **on** even when the pedal is in bypass

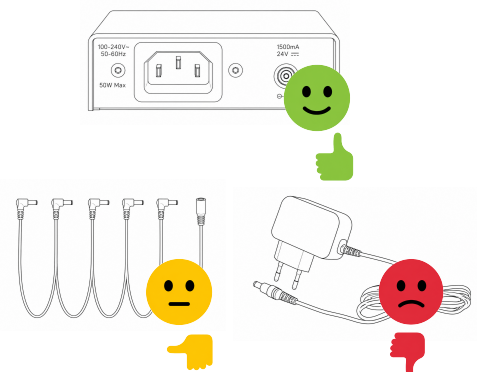
#### OFF:

COLOR LED representing the current tone is **off** until the pedal is switched on.

### technical data

True Bypass	Yes
Switch Typ	Toggle
Length	113mm
Width	92mm (96mm incl. jacks)
Height	36mm (54mm incl. footswitch)
Weight	630g
Voltage	9V DC (center-negative)(up to max. 18V possible)
Current	35mA (9V)
Power supply included	No
Battery compartment	No

RoHS Compliant  
CE (EU) Compliant  
Designed and assembled in Germany



The user is responsible for any injuries or damages that may result from the incorrect use of this electronic product.

V1.0 - Serial 01 - 16  
V1.1(a) - Serial 17 - 81